

# POLY Series



150 39.6  
l/min USGPM



126 33.3  
l/min USGPM



15 218  
bar P.S.I.

Pompe a 3 membrane-pistone semidrauliche

Three piston semi-hydraulic diaphragm pump.

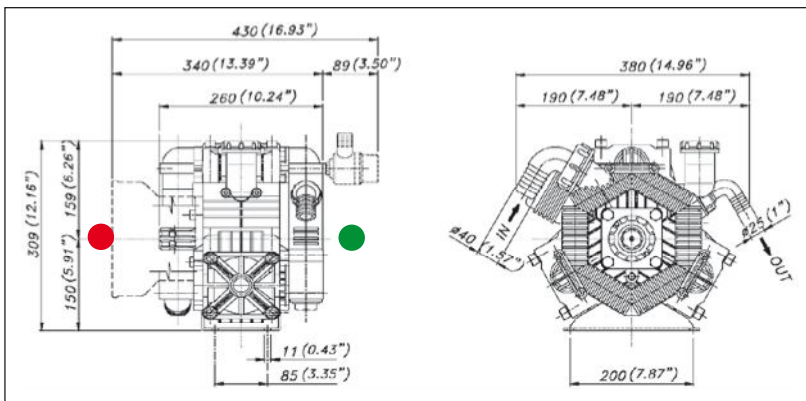
Мембранно-поршневой насос с 3 полугидравлическими узлами

## POLY 2120

62.6050.97.3 - VS  
62.6051.97.3 - VDA  
62.6052.97.3 - VD  
62.6053.97.3 - VA

## POLY 2150

62.6117.97.3 - VS  
62.6118.97.3 - VDA  
62.6119.97.3 - VD  
62.6121.97.3 - VA



Optional - Optional - По заказу  

TABELLA RENDIMENTI - PERFORMANCE CHART - ТАБЛИЦА ПРОИЗВОДИТЕЛЬНОСТИ

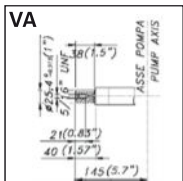
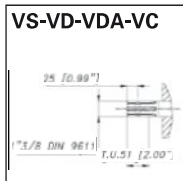
| POLY 2120                    | g./min; R.P.M.; об/мин |            |                |            |                |            |                |            | POLY 2150                    | g./min; R.P.M.; об/мин |            |                |            |                |            |                |            |
|------------------------------|------------------------|------------|----------------|------------|----------------|------------|----------------|------------|------------------------------|------------------------|------------|----------------|------------|----------------|------------|----------------|------------|
|                              | 400                    |            | 450            |            | 500            |            | 550            |            |                              | 400                    |            | 450            |            | 500            |            | 550            |            |
| g/min<br>R.P.M. →<br>об/мин; | L/min<br>USGPM         | KW<br>HP   | L/min<br>USGPM | KW<br>HP   | L/min<br>USGPM | KW<br>HP   | L/min<br>USGPM | KW<br>HP   | g/min<br>R.P.M. →<br>об/мин; | L/min<br>USGPM         | KW<br>HP   | L/min<br>USGPM | KW<br>HP   | L/min<br>USGPM | KW<br>HP   | L/min<br>USGPM | KW<br>HP   |
| 2<br>29                      | 92<br>24,2             | 0,4<br>0,5 | 103<br>27,2    | 0,4<br>0,5 | 115<br>30,3    | 0,4<br>0,6 | 126<br>33,3    | 0,5<br>0,7 | 2<br>29                      | 109<br>28,8            | 0,4<br>0,6 | 123<br>32,4    | 0,5<br>0,6 | 136<br>36,0    | 0,5<br>0,7 | 150<br>39,6    | 0,6<br>0,8 |
| 5<br>72,5                    | 91<br>24,0             | 0,9<br>1,2 | 102<br>27,0    | 1,0<br>1,3 | 114<br>30,0    | 1,1<br>1,5 | 125<br>33,0    | 1,2<br>1,6 | 5<br>72,5                    | 108<br>28,4            | 1,1<br>1,4 | 121<br>32,0    | 1,2<br>1,6 | 135<br>35,5    | 1,3<br>1,8 | 148<br>39,1    | 1,5<br>1,9 |
| 10<br>145                    | 90<br>23,8             | 1,8<br>2,4 | 101<br>26,8    | 2,0<br>2,7 | 113<br>29,8    | 2,2<br>3,0 | 124<br>32,8    | 2,4<br>3,3 | 10<br>145                    | 105<br>27,9            | 2,1<br>2,8 | 119<br>31,3    | 2,3<br>3,1 | 132<br>34,8    | 2,6<br>3,5 | 145<br>38,3    | 2,8<br>3,8 |
| 15<br>218                    | 89<br>23,4             | 2,6<br>3,5 | 100<br>26,4    | 2,9<br>3,9 | 111<br>29,3    | 3,3<br>4,4 | 122<br>32,2    | 3,6<br>4,8 | 15<br>218                    | 104<br>27,5            | 3,1<br>4,1 | 117<br>30,9    | 3,4<br>4,6 | 130<br>34,3    | 3,8<br>5,1 | 143<br>37,8    | 4,2<br>5,6 |

ALBERO POMPA - PUMP SHAFT - ВАЛ НАСОСА



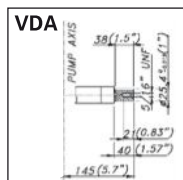
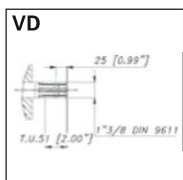
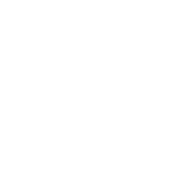
ANT. - FRONT - ЛЕП.

ANT. - FRONT - ЛЕП.



POST. - REAR - ЗАД.

POST. - REAR - ЗАД.



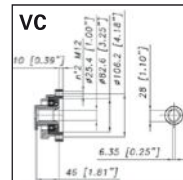
POST. - REAR - ЗАД.

POST. - REAR - ЗАД.

### Caratteristiche tecniche

Specifications  
Технические характеристики

| g/min; R.P.M.; об/мин;   | g/min.  | R.P.M.        | 550       | 550     |
|--|---|---------------|-----------|---------|
| <b>Potenza - Power - Мощность</b>  | <b>KW</b>   | <b>HP</b>     |           |         |
| <b>Peso - Weight - Вес</b>   | <b>Kg</b>   | <b>lb</b>     | 19        | 41,8    |
| <b>Dislivello aspirazione</b><br>Negative pressure<br>Перепад уровня<br>при всасывании | <b>MAX</b>  | <b>mt</b>     | <b>ft</b> | 1,5 4,9 |
|  | <b>Servizio discontinuo</b><br>Discontinuous service - Прерывистая работа | <b>mt</b>     | <b>ft</b> | 3 9,8   |
| <b>Ø Aspirazione - Ø Intake - Ø Вход</b>   | <b>mm</b>   | <b>in</b>     | 40        | 1"9/16  |
| <b>Ø Mandata - Ø High pressure - Ø Выход</b>   | <b>mm</b>   | <b>in</b>     | 25        | 1"      |
| <b>Max. Temperatura - MAX Temperature - Макс Температура</b>                           | <b>°C</b>   | <b>°F</b>     | 60        | 140     |
| <b>Tipo olio - Oil type - Тип масла</b>  | <b>SAE</b>  | <b>W</b>      | 30        | 30      |
| <b>Capacità olio - Oil capacity - Объем масла</b>                                      | <b>lt</b>   | <b>U.S.G.</b> | 1         | 0,26    |



POST. - REAR - ЗАД.

