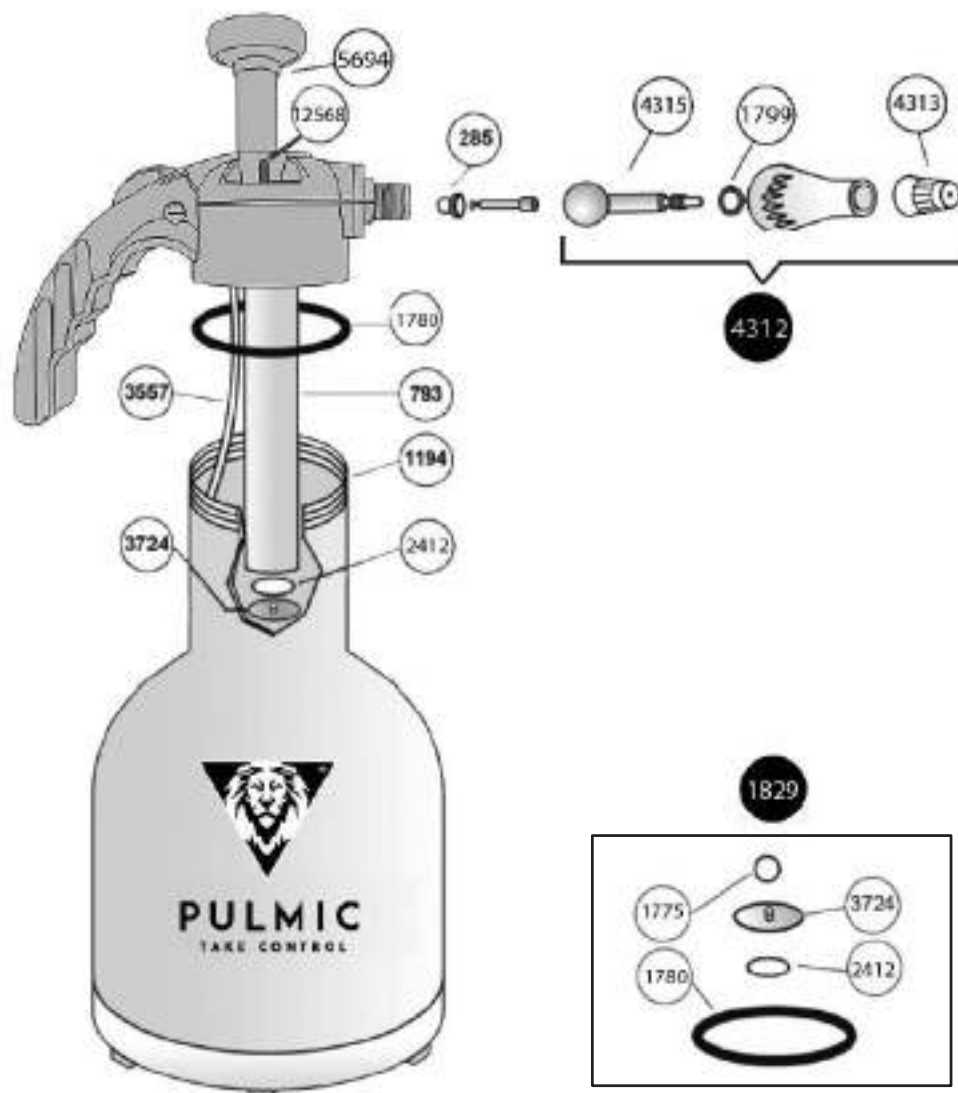


Ref: 4982 RAPTOR 2



| COD.  | ESPAÑOL                      | ENGLISH             | FRANÇAIS                | PORTUGÜES              | UDS |
|-------|------------------------------|---------------------|-------------------------|------------------------|-----|
| 285   | Asiento grifo                | Lock exit tube      | Place fermeture robinet | Fechamento torneira    | 1   |
| 793   | Cilindro                     | Cylinder            | Cylindre                | Cilindro               | 1   |
| 1194  | Depósito                     | Tank                | Reservoir               | Deposito               | 1   |
| 1775  | Junta tórica NBR 4.5x2       | NBR Toric gasket    | Joint torique NBR       | O-ring NBR             | 1   |
| 1780  | Junta tórica NBR 55x4        | NBR Toric gasket    | Joint torique NBR       | O-ring NBR             | 1   |
| 1799  | Junta tórica vitón 4.5x2     | Vitón toric gasket  | Joint torique viton     | O-ring viton           | 1   |
| 1829  | Kit de repuesto              | Spare kit           | Kit détaché             | Conjunto O-rings       | 1   |
| 2412  | Junta tórica NBR 17.86x2.62  | NBR Toric gasket    | Joint torique NBR       | O-ring NBR             | 1   |
| 3557  | Tubo aspiración C/filtro     | Aspiration tube     | Tuyau s'aspiration      | Cano de aspiração      | 1   |
| 3724  | Válvula vitón presión previa | Viton valve         | Soupape viton           | Válvula viton          | 5   |
| 4312  | Conjunto boquilla            | Nozzle kit          | Jeu de Buse             | Conjunto injector      | 1   |
| 4313  | Boquilla plástico            | Nozzle              | Buse Plastique          | Inj. plastico          | 1   |
| 4315  | Cuerpo boquilla              | Nozzle Body         | Corps de buse           | Corpo do Inj.          | 1   |
| 5694  | Eje portapistón              | Piston holder shaft | Axe porte-piston        | Eixo porta-pistão      | 1   |
| 12568 | Válvula aire completa        | Complete air valve  | Vanne d'air complète    | Válvula de ar completa | 1   |