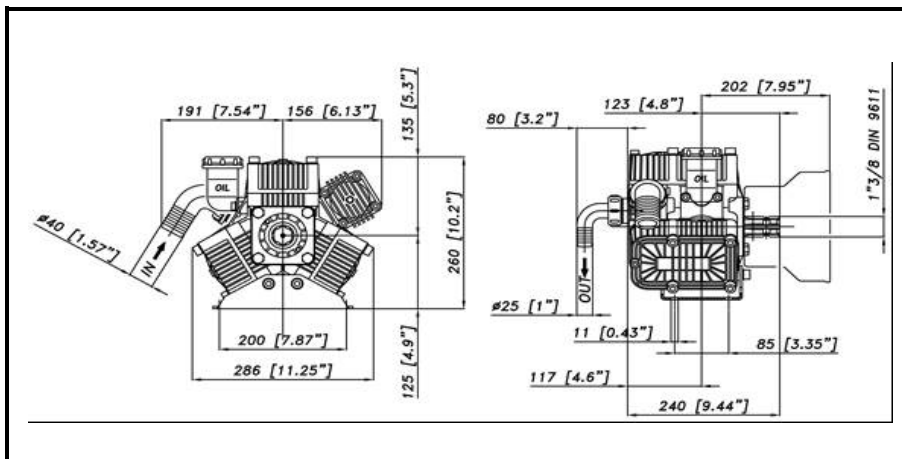
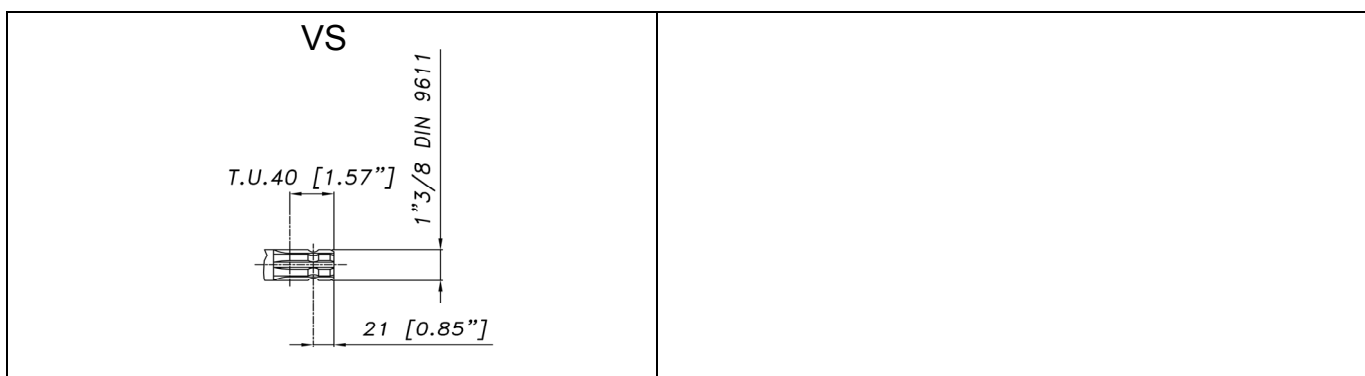


DIMENSIONI D'INGOMBRO - OVERALL DIMENSIONS



ALBERO POMPA - PUMP SHAFT



**COPPIA DI SERRAGGIO - TORQUE CHART**

CODICE - CODE	Q.TY	POS	N.m	Lbr.ft
63.0018.51.2	3	33	25	18,5
83.5089.00.2	1	41	20	14,8
85.2585.00.2	1	50	5	3,7
86.2684.00.2	2	22	5	3,7
86.3001.50.2	3	36	10	7,4
86.3187.05.2	4	31	22	16,3
86.2752.50.2	4	59	22	16,3
86.3265.50.2	3	17	44	32,5
86.3562.05.2	12	35	30	22
86.3694.65.2	1	75	40	29,5
86.2852.00.2	4	91	10	7,4

Tolleranza di serraggio: 0/-10%  
Tolerance on torque value: 0/-10%

**INFORMAZIONI UTILI  
USEFUL INFORMATION**

**LUBRIFICANTE- LUBRICANT:**  
OLIO MOTORE O SEMIIDRAULICO SAE 30  
MOTOR OIL OR SEMI-HYDRAULIC OIL SAE 30

**PRESSIONE ACCUMULATORE  
ACCUMULATOR PRESSURE**

PRESSIONE DI LAVORO - OPERATING PRESSURE	2 ÷ 5	5+10	10 ÷ 20	20 ÷ 50
ACCUMULATORE ACCUMULATOR	2	2 ÷ 5	5 ÷ 7	6 ÷ 8

KIT MEMBRANE - DIAPHRAGMS KIT

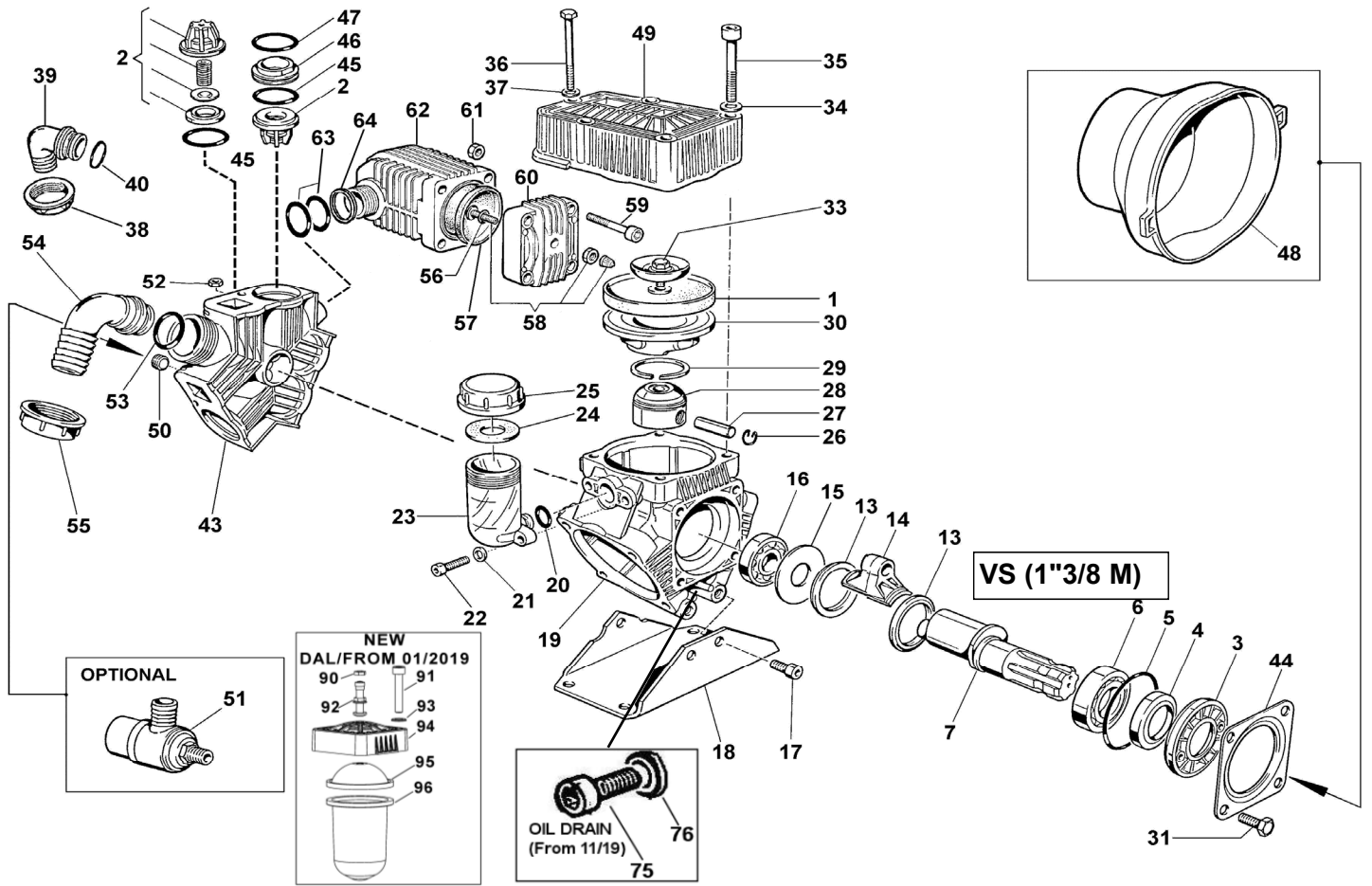
KIT	BUNA - N				PRE-SET DURAMAX				PRE-SET DESMOPAN				VITON				PENTAX			
	63.9828.97.3	63.9828.97.A *	63.9829.97.3DS	63.9829.97.ADS	63.9829.97.3	63.9829.97.A *	63.9831.97.3	63.9831.97.A	63.9831.97.3	63.9831.97.A	63.9832.97.3	63.9832.97.A *	63.9832.97.3	63.9832.97.A *	63.9832.97.3	63.9832.97.A *				
POSIZIONE ESPLOSO POSITION NUMBER	1	45	47	57	1	45	47	57	1	45	47	57	1	45	47	57				
QUANTITA' NEL KIT QUANTITIES INCLUDED	3	6	4	1	3	6	4	1	3	6	4	1	3	6	4	1				

\* .3: per pompe con calotta accumulatore in alluminio/for pumps with aluminum ballaster cover  
\* .A: per pompe con calotta accumulatore in polipropilene/for pumps with polypropylene ballaster cover

KIT POMPA/KIT VALVOLE - PUMP KIT/VALVES KIT

KIT	KIT POMPA VS PUMP KIT VS				KIT VAM INOX 303 VALVES KIT 303		KIT VAM INOX 316 VALVES KIT 316	
	63.9827.97.3	63.9827.97.3	63.9827.97.3	63.9827.97.3	63.9827.97.3	63.9827.97.3	63.9827.97.3	
POSIZIONE ESPLOSO POSITION NUMBER	5	4	45	47	2	45	47	
QUANTITA' NEL KIT QUANTITIES INCLUDED	1	1	6	4	6	6	4	

# POLY 2100 VS (1"3/8 M)



POS.	CODICE PART NO. REF.	DENOMINAZIONE - DESCRIPTION - DESCRIPTION	Q.TY	POS.	CODICE PART NO. REF.	DENOMINAZIONE - DESCRIPTION - DESCRIPTION	Q.TY
1	95.0040.31.2	PISTON DIAPHRAGM	3	40	80.3219.05.2	O-RING 3,0x25 VITON	1
1	95.0040.33.2	VITON PISTON DIAPHRAGM	3	43	63.0116.32.2	MANIFOLD	1
1	95.0040.00.ADS	PRE-SET DURAMAX PISTON DIAPHRAGM	3	44	17.0016.61.2	FLANGE	1
1	95.0040.00.A	PRE-SET DESMOPAN PISTON DIAPHRAGM	3	45	80.3320.70.2	O-RING 5,0x40 VITON	6
2	28.9905.97.3	S.S. AISI 316 VALVE ASSY (STD.)	6	46	28.0229.32.2	VALVE ASSY SPACER	4
2	28.9809.97.3	S.S. AISI 303 VALVE ASSY (OPT.)	6	47	80.3219.90.2	O-RING 3,0x39 VITON	4
3	53.0007.32.2	HOUSING	1	48	31.1468.32.2	PLAIN SAFETY CONE (OPTIONAL)	1
4	80.2143.10.2	OIL SEAL DIA.35x52x7	1	49	63.0022.32.2	HEAD	3
5	80.3310.00.2	O-RING 4.0X82	1	50	85.2585.00.2	CAP G.3/8	1
6	81.2837.00.2	BEARING DIA.35x62x14	1	51	24.3016.97.3	SAFETY VALVE 15bar (OPTIONAL)	1
7	63.0009.26.2	CRANKSAFT "VS" VERSION	1	52	81.4573.00.2	NUT M8 UNI5588	3
13	26.0047.76.2	CONNECTING ROD RING	2	53	80.3219.15.2	O-RING 3,0x30 VITON	1
14	23.0005.09.2	LIGHT ALLOY CONROD	3	54	84.0570.00.2	90° ELBOW CONNECTOR DIA.35-1,37" (OPT.)	1
15	95.0097.61.2	CRANKSHAFT SPACER	1	54	84.0561.00.2	90° ELBOW CONNECTOR DIA.30-1,18" (OPT.)	1
16	81.2646.00.2	BEARING DIA.20x52x15	1	54	84.0566.00.2	90° ELBOW CONNECTOR DIA.32-1,25" (OPT.)	1
17	86.3265.50.2	SCREW M10x25 UNI5931	3	54	84.0571.00.2	90° ELBOW CONNECTOR DIA.38-1,49" (OPT.)	1
18	63.0006.61.2	MOUNTING RAIL	1	54	84.0591.00.2	90° ELBOW CONNECTOR DIA.40-1,57"	1
19	63.0101.09.2	CRANKCASE	1	55	82.0070.00.2	WING NUT G.1"1/2	1
20	80.3180.00.2	O-RING 2,62x15,08	1	56	80.3213.00.2	O-RING 3,0x6 (BEFORE 01-19)	1
21	84.3685.40.2	WASHER DIA.8,2x15x1,5	2	57	23.0041.31.2	BALLASTER DIAPHRAGM	1
22	86.2684.00.2	SCREW M8x25 UNI5931	2	58	86.1608.50.2	AIR VALVE (BEFORE 01-19)	1
23	23.0008.32.2	OIL FILLER	1	59	86.2752.50.2	SCREW TCEI M8x35 (BEFORE 01-19)	4
24	82.4120.00.2	GASKET DIA.45x19x1,5	1	60	11.0004.09.2	BALLASTER COVER (BEFORE 01-19)	1
25	85.2750.00.2	OIL FILLER CAP	1	61	81.4574.50.2	NUT M8	4
26	80.0021.00.2	RING DIA.15	6	62	27.0035.32.2	DAMPER BODY	1
27	85.2006.70.2	PISTON PIN DIA.15	3	63	80.3207.50.2	O-RING 2,62x29,82 VITON	2
28	63.0103.09.2	PISTON	3	64	63.0120.32.2	DAMPER SPACER	1
29	81.8524.00.2	PISTON RING	3	75	86.3694.65.2	SCREW M12x20 UNI5931	1
30	63.0104.01.2	PISTON SLEEVE	3	76	82.4066.00.2	GASKET DIA.13,2x17x1 COPPER	1
31	86.3187.05.2	SCREW M10x18 UNI5739	4	90	86.1611.00.2	AIR VALVE NUT (FROM 01-19)	1
33	63.9806.97.3	KIT SCREW/DISK INOX	3	91	86.2852.00.2	SCREW M8X45 (FROM 01-19)	4
34	84.3805.00.2	WASHER DIA.10,5x21x2	12	92	86.1609.00.2	AIR VALVE (FROM 01-19)	1
35	86.3562.05.2	SCREW M10x70 UNI5931	12	93	84.3685.40.2	WASHER D.8,4x15x1,5 (FROM 01-19)	4
36	86.3001.05.2	SCREW M8x75 UNI5931	3	94	11.0183.32.2	BALLASTER COVER (FROM 01-19)	1
37	84.3697.00.2	WASHER DIA.8,4x18x2	3	95	10.0041.31.2	SUP. BALLASTER DIAPHRAGM (FROM 01-19)	1
38	82.0067.50.2	WING NUT G.1"1/4	1	96	23.0094.31.2	INF.BALLASTER DIAPHRAGM (FROM 01-19)	1
39	84.0542.40.2	90° ELBOW CONNECTOR DIA.25-1"	1				