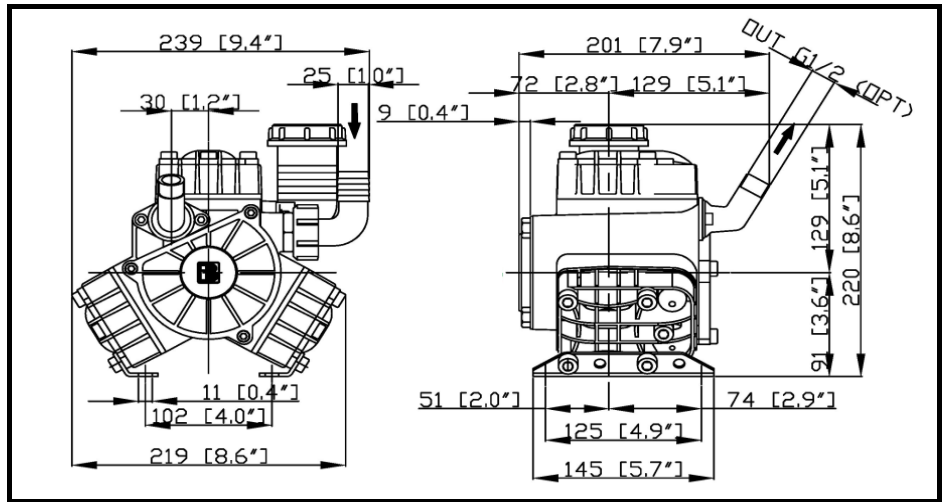
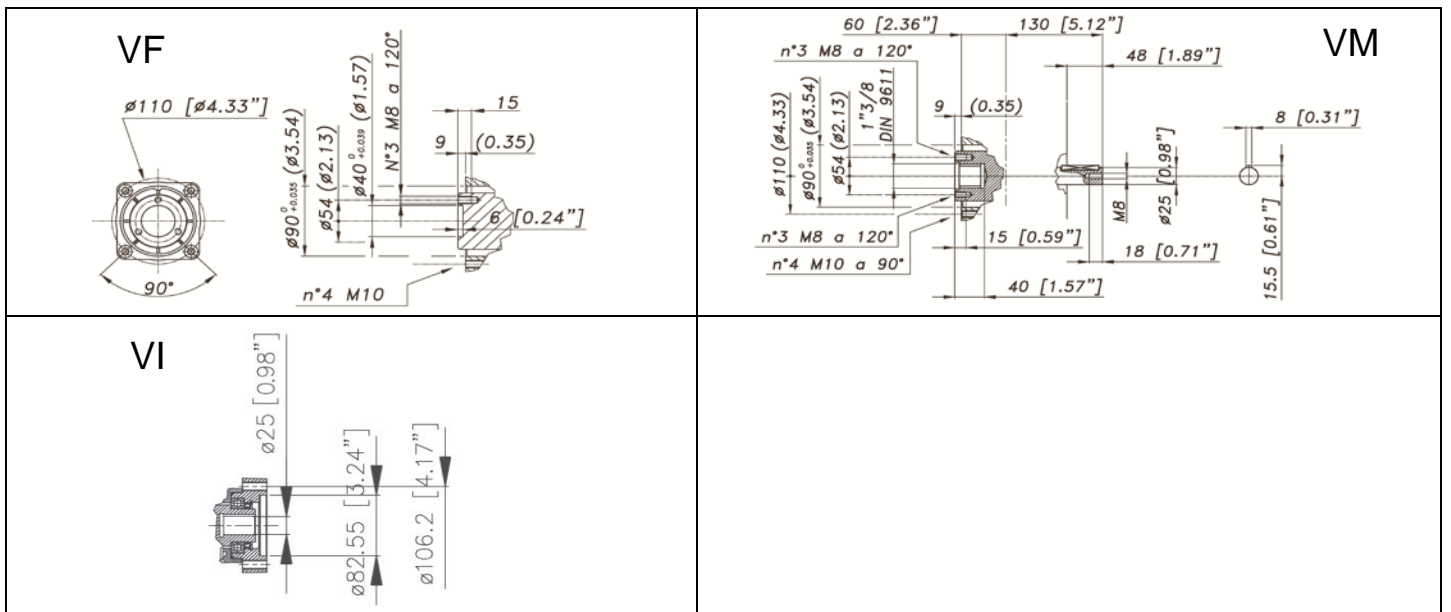


DIMENSIONI D'INGOMBRO - OVERALL DIMENSIONS



ALBERO POMPA - PUMP SHAFT



**COPPIA DI SERRAGGIO - TORQUE CHART**

| CODICE - CODE | Q.TY | POS | N.m | Lbr.ft |
|---------------|------|-----|-----|--------|
| 86.2131.00.2  | 3    | 9   | 10  | 7,4    |
| 86.2730.00.2  | 2    | 20  | 10  | 7,4    |
| 86.2168.00.2  | 2    | 7   | 10  | 7,4    |
| 86.2893.00.2  | 11   | 43  | 22  | 16,2   |
| 86.2900.00.2  | 4    | 13  | 22  | 16,2   |
| 86.3185.00.2  | 4    | 36  | 22  | 16,2   |
| 03.0021.97.3  | 3    | 44  | 5   | 3,7    |

Tolleranza di serraggio: 0/-10%  
Tolerance on torque value: 0/-10%

**INFORMAZIONI UTILI - USEFUL INFORMATION**

**LUBRIFICANTE - LUBRICANT:**  
OLIO MOTORE O SEMIDRAULICO SAE 30  
MOTOR OIL OR SEMI-HYDRAULIC OIL SAE 30

**PRESSIONE ACCUMULATORE - ACCUMULATOR PRESSURE**

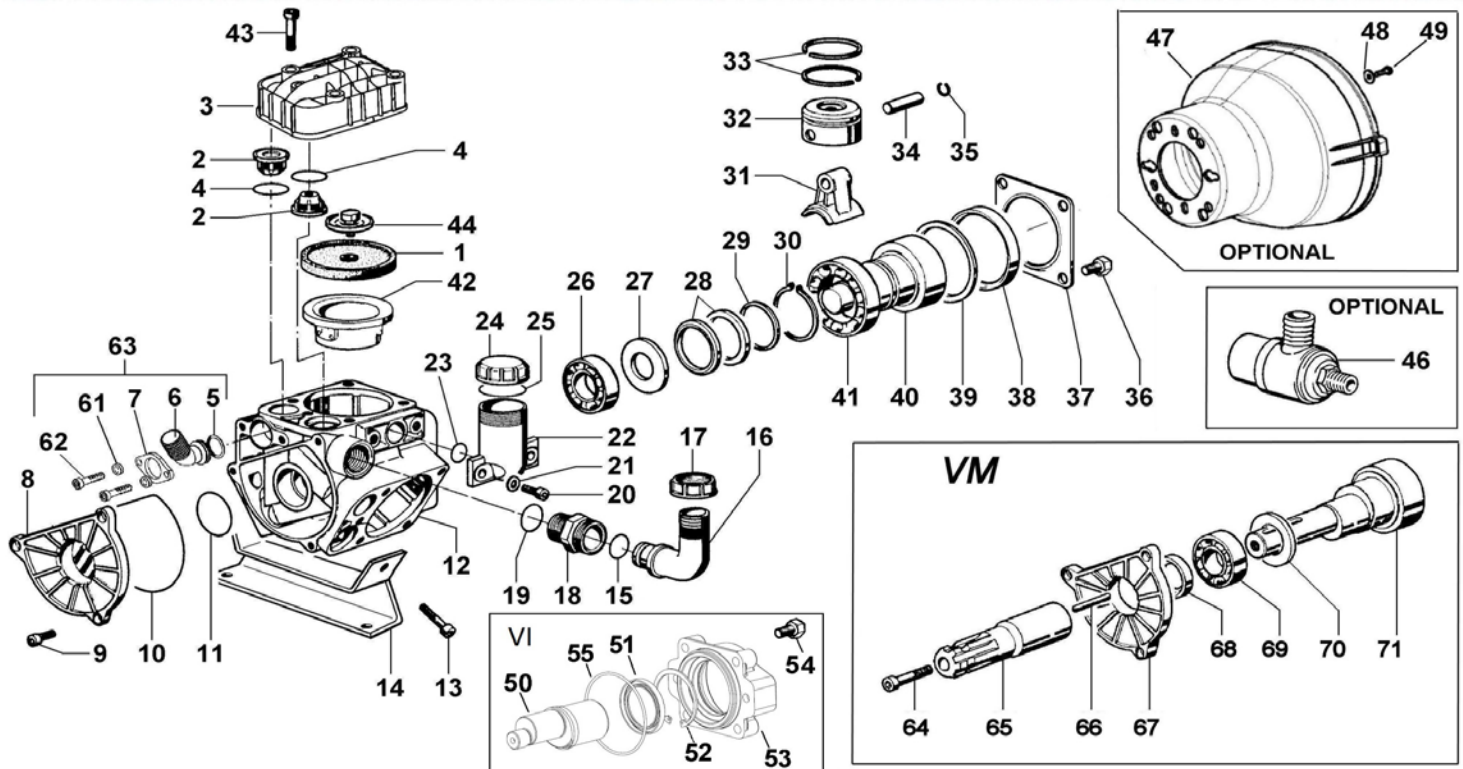
| PRESSIONE DI LAVORO - OPERATING PRESSURE | 2 ÷ 5 | 5 ÷ 10 | 10 ÷ 20 | 20 ÷ 50 |
|--|-------|--------|---------|---------|
| ACCUMULATORE - ACCUMULATOR               | /     | /      | /       | /       |

**KIT MEMBRANE - DIAPHRAGMS KIT**

| KIT                                     | 03.9876.97.3 | BUNA - N | 03.9877.97.3 | DESMOPAN | 03.9872.97.3 | PENTAX |  |  |  |  |  |  |  |
|---|--------------|----------|--------------|----------|--------------|--------|--|--|--|--|--|--|--|
| POSIZIONE ESPLOSO - POSITION NUMBER     |              | 1 4      |              | 1 4      |              | 1 4    |  |  |  |  |  |  |  |
| QUANTITA' NEL KIT - QUANTITIES INCLUDED |              | 3 6      |              | 3 6      |              | 3 6    |  |  |  |  |  |  |  |

**KIT POMPA/KIT VALVOLE - PUMP KIT/VALVES KIT**

| KIT                                     | 03.9874.97.3 | KIT POMPA VM - PUMP KIT VM |    |    |    | 03.9875.97.3 | KIT VALVOLE - VALVE KIT |   |  |  |  |  |  |
|---|--------------|----------------------------|----|----|----|--------------|-------------------------|---|--|--|--|--|--|
| POSIZIONE ESPLOSO - POSITION NUMBER     |              | 4                          | 38 | 10 | 11 |              | 2                       | 4 |  |  |  |  |  |
| QUANTITA' NEL KIT - QUANTITIES INCLUDED |              | 6                          | 1  | 1  | 1  |              | 6                       | 6 |  |  |  |  |  |



| POS. | CODICE PART NO. REF. | DENOMINAZIONE - DESCRIPTION - DESCRIPTION | Q.TY | POS. | CODICE PART NO. REF. | DENOMINAZIONE - DESCRIPTION - DESCRIPTION | Q.TY |
|------|----------------------|---|------|------|----------------------|---|------|
| 1    | 03.0040.31.2         | PISTON DIAPHRAGM                          | 3    | 31   | 03.0005.09.2         | CONROD                                    | 3    |
| 1    | 03.0040.00.2         | DESMOPAN PISTON DIAPHRAGM                 | 3    | 32   | 03.0006.09.2         | PISTON                                    | 3    |
| 1    | 03.0040.36.2         | HPS PISTON DIAPHRAGM                      | 3    | 33   | 81.8502.50.2         | PISTON RING                               | 6    |
| 2    | 03.9821.97.3         | VALVE ASSY                                | 6    | 34   | 85.2006.00.2         | PISTON PIN DIA.10                         | 3    |
| 3    | 03.0202.09.2         | HEAD                                      | 3    | 35   | 80.0003.00.2         | RING DIA.10                               | 6    |
| 4    | 03.0029.36.2         | VALVE SEAL                                | 6    | 36   | 86.3185.00.2         | SCREW M10x16 UNI5739                      | 4    |
| 5    | 80.3218.00.2         | O-RING 3,0x22                             | 1    | 37   | 17.0013.61.2         | COVER                                     | 1    |
| 6    | 31.1515.09.2         | OUTLET FLANGE G.1/2                       | 1    | 38   | 80.2264.10.2         | OIL SEAL DIA.68x90x10                     | 1    |
| 7    | 31.1517.61.2         | FLANGE                                    | 1    | 39   | 03.0015.61.2         | SPACER                                    | 1    |
| 8    | 03.0003.09.2         | SUCTION COVER                             | 1    | 40   | 03.0044.26.2         | CRANKSHAFT VF VERSION                     | 1    |
| 9    | 86.2131.00.2         | SCREW M6x18 UNI5931                       | 3    | 41   | 81.2933.00.2         | BEARING DIA.45x75x16                      | 1    |
| 10   | 80.3210.66.2         | O-RING 2,62x101,27                        | 1    | 42   | 03.0045.01.2         | PISTON SLEEVE                             | 3    |
| 11   | 80.3208.30.2         | O-RING 2,62x36,14                         | 1    | 43   | 86.2893.00.2         | SCREW M8x50 UNI5931                       | 11   |
| 12   | 03.0001.09.2         | CRANKCASE VF VERSION                      | 1    | 44   | 03.0048.97.3         | KIT DIAPHRAGM WASHER/SCREW AISI 316       | 3    |
| 12   | 03.0001.09.2         | CRANKCASE VM VERSION                      | 1    | 46   | 24.3040.97.3         | SAFETY VALVE 40bar (OPTIONAL)             | 1    |
| 13   | 86.2900.00.2         | SCREW M8x55 UNI5931                       | 4    | 47   | 31.1482.32.2         | PLAIN SAFETY CONE (OPTIONAL)              | 1    |
| 14   | 03.0033.61.2         | MOUNTING RAIL                             | 2    | 48   | 84.3810.00.2         | WASHER DIA.10,5x21x2 (OPTIONAL)           | 4    |
| 15   | 80.3200.00.2         | O-RING 2,62x22,22                         | 1    | 49   | 86.3212.00.2         | SCREW M10x20 UNI5931 (OPTIONAL)           | 4    |
| 16   | 84.0542.00.2         | 90° ELBOW CONNECTOR DIA.25-1"             | 1    | 50   | 03.0034.26.2         | SHAFT "VI"                                | 1    |
| 17   | 82.0049.00.2         | WING NUT M34                              | 1    | 51   | 80.2191.00.2         | OIL SEAL DIA.45X62X7                      | 1    |
| 18   | 83.5062.10.2         | NIPPLES G.3/4-M34                         | 1    | 52   | 80.1400.00.2         | RING D.62                                 | 1    |
| 19   | 80.3205.00.2         | O-RING 2,62x25,07                         | 1    | 53   | 22.0333.09.2         | FLANGE                                    | 1    |
| 20   | 86.2730.00.2         | SCREW M8x30 UNI5931                       | 2    | 54   | 86.3347.00.2         | SCREW M10X35 UNI5931                      | 4    |
| 21   | 84.3685.00.2         | WASHER DIA.8,4x15x1,5                     | 2    | 55   | 80.3210.67.2         | O-RING 2,62X88,57                         | 1    |
| 22   | 23.0008.32.2         | OIL FILLER                                | 1    | 61   | 84.3585.00.2         | WASCHER D.6 UNI6592                       | 2    |
| 23   | 80.3180.00.2         | O-RING 2,62x15,08                         | 1    | 62   | 86.2108.00.2         | SCREW M6x16 UNI5931                       | 2    |
| 24   | 85.2750.00.2         | OIL FILLER CAP (before 08/2020)           | 1    | 63   | 31.8916.97.3         | KIT G.1/2"                                | 1    |
| 24   | 85.2750.00.2A        | OIL FILLER CAP. (from 09/2020)            | 1    | 64   | 86.3044.00.2         | SCREW M 8x90                              | 1    |
| 25   | 82.4120.00.2         | GASKET DIA.45x19x1,5 (before 08/2020)     | 1    | 65   | 31.0601.42.2         | REDUCTIONS DIA.25 - 1" 3/8                | 1    |
| 25   | 23.0097.31.2         | OIL TANK DIAPHRAGM (from the 09/2020)     | 1    | 66   | 80.6541.20.2         | KEY 8x7x50                                | 1    |
| 26   | 81.2646.00.2         | BEARING DIA.20x52x15                      | 1    | 67   | 03.0023.09.2         | SUCTION COVER VM VERSION                  | 1    |
| 27   | 03.0011.61.2         | SPACER                                    | 1    | 68   | 80.2092.10.2         | OIL SEAL DIA. 25x35x7                     | 1    |
| 28   | 94.0047.76.2         | CONROD RING                               | 2    | 69   | 81.2707.00.2         | BEARING DIA.25x52x15                      | 1    |
| 29   | 03.0012.61.2         | SPACER                                    | 1    | 70   | 03.0013.61.2         | SPACER                                    | 1    |
| 30   | 80.1331.00.2         | SHAFT RING D.45                           | 1    | 71   | 03.0050.26.2         | CRANKSHAFT VM VERSION                     | 1    |